

# CANDLEWOOD LAKE

## UNIT 7

110949

**DESCRIPTION**

SITUATED IN the Township of Congress, County of Morrow, and State of Ohio, being a part of Sections 8 & 17 Township 18, Range 20, containing 144.76 acres in Unit 7.

**SURVEYOR'S CERTIFICATION**

I HEREBY CERTIFY that the within plat of Unit 7 Candlewood Lake was prepared by the office of George W. Raika, Inc., Consulting Engineers and Donald S. Vermilya, Registered Surveyor.

All bearings were computed from a magnetic bearing taken on June 29, 1971 and all distances are in feet and decimals thereof.

*Donald S. Vermilya*  
Registered Surveyor No. 5695

**DECLARATION AND DEDICATION**

We do hereby certify that we are the owners of the land shown on the above plat and we do certify that we have caused the survey and subdivision thereof to be made as shown on the above plat and to be known as "Candlewood Lake Subdivision" Unit 7 Lots 1 to 330 and Parcels A to Q inclusive in the Township of Congress, Morrow County, Ohio, and acknowledge said survey to be correct to the best of our knowledge and belief, and we hereby dedicate those State, County and Township Roads labeled on the map. The streets within the plat labeled "private street" are hereby reserved for the use of all public utility companies.

**OWNER'S ACKNOWLEDGMENT**

BE IT REMEMBERED that Whetstone Development, Inc., a Delaware Corporation, owner of the lands shown on the attached Plat, do hereby acknowledge the making of said plat to be its voluntary act and deed.

Witnesses  
By *Fred S. Grider* VICE PRESIDENT  
By *Ernest Augustein* ASST. SECTY.

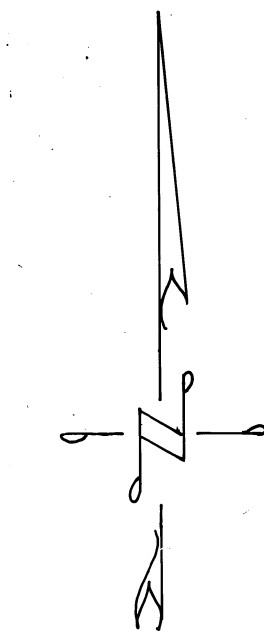
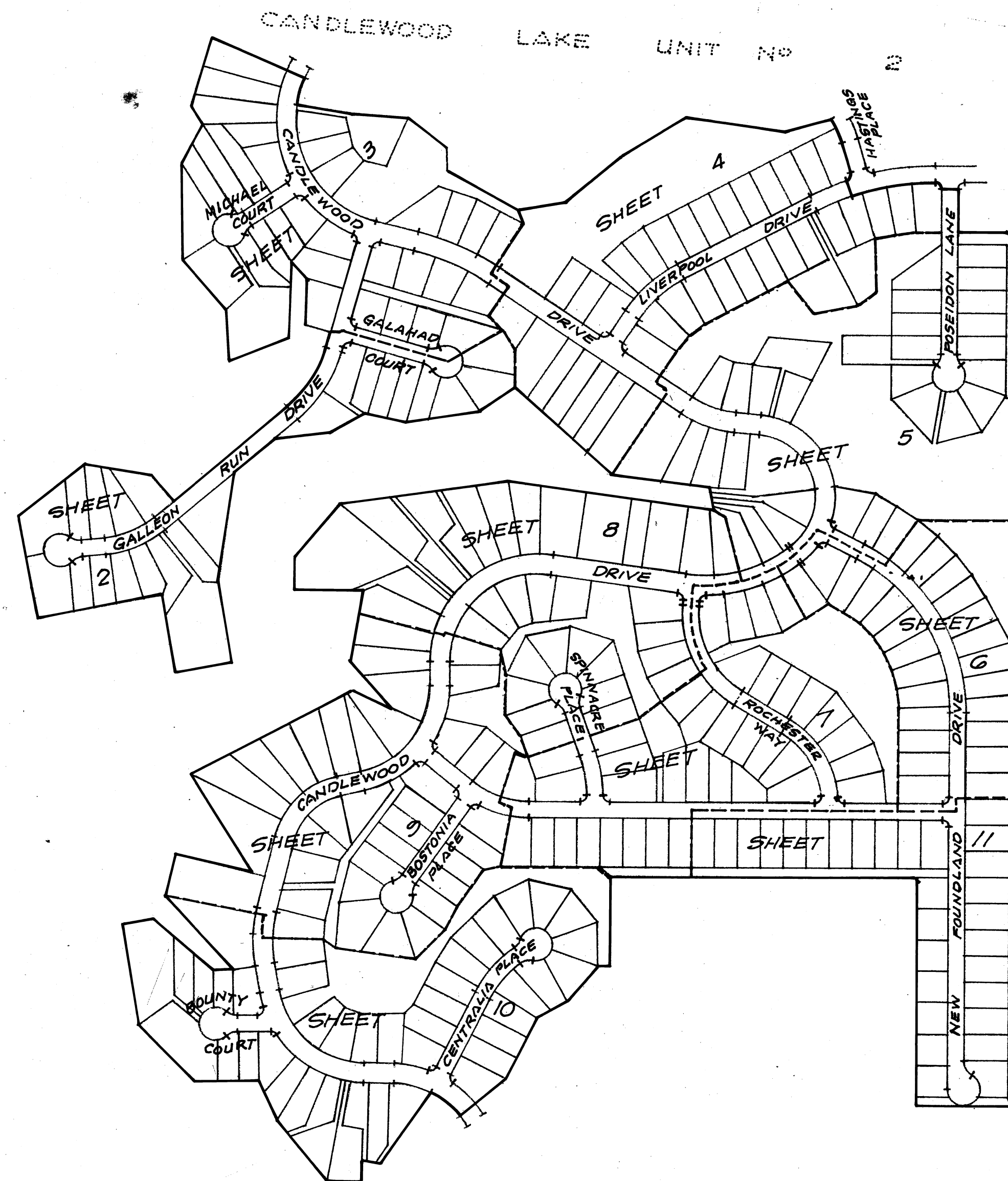
STATE OF OHIO  
COUNTY OF MORROW SS

Before me, a notary public, in and for said county, personally appeared FRED GRIDER VICE PRESIDENT and ERNEST AUGUSTEIN ASST. SECTY. of Whetstone Development, Inc., the corporation which executed the foregoing Owner's Acknowledgment, who acknowledged that the seal affixed to said instrument is the corporate seal of said corporation; that they did sign and seal said instrument as such VICE PRES. and ASST. SECTY. in behalf of said corporation and by authority of its board of directors; and that said instrument is their free act and deed individually and as such VICE PRES. and ASST. SECTY. and the free and corporate act and deed of said Whetstone Development, Inc.

IN TESTIMONY WHEREOF I have hereunto subscribed my name and affixed my official seal at St. Charles, this 3 day of June, 1972.

*Ralph H. Hoptner*  
Notary Public

My Commission Expires April 9, 1975



ALL PROPERTY CORNERS MARKED BY IRON PINS  
● IRON PIN SET  
▲ RAILROAD SPIKE SET  
○ CONCRETE MONUMENT

PRESENTED TO MORROW COUNTY COMMISSIONERS  
THE WITHIN PLAT was presented to the Board of Morrow County Commissioners for their approval on July 3, 1972.  
MORROW COUNTY COMMISSIONERS:  
*Robert Rhodolick*  
*John Shad*  
*F. F. Bolinger*  
*Clairne Keerna* Clerk

APPROVAL OF MORROW COUNTY COMMISSIONERS  
I HEREBY CERTIFY that this plat was approved by the Morrow County Commissioners at a Regular meeting held July 3, 1972.  
MORROW COUNTY COMMISSIONERS:  
*Robert Rhodolick*  
*John Shad*  
*F. F. Bolinger*  
*Clairne Keerna* Clerk

APPROVAL OF MORROW COUNTY BOARD OF HEALTH  
I HEREBY CERTIFY that this plat was approved by the Morrow County Board of Health at a regular meeting held JUNE 29, 1972.  
*William J. Schick* (TITLE)  
*Sanitation* (TITLE)

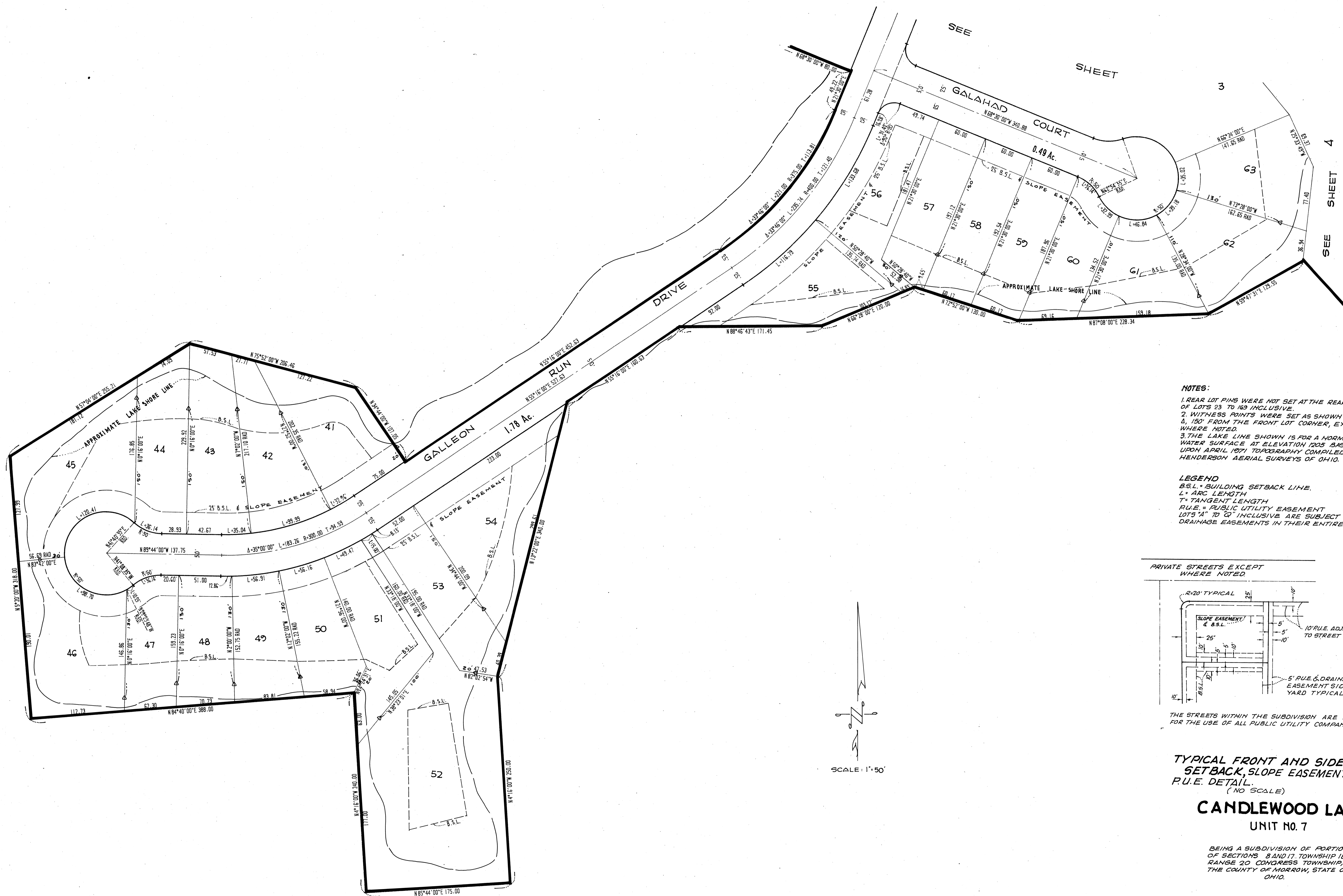
APPROVAL OF MORROW COUNTY REGIONAL PLANNING COMMISSION  
I HEREBY CERTIFY that the within plat was approved by the Morrow County Regional Planning Commission at a Regular meeting held JUNE 29, 1972.  
*Martin Hark* (TITLE) President  
*William J. Schick* (TITLE) Secretary

APPROVAL OF MORROW COUNTY ENGINEER  
I HEREBY APPROVE the within plat of Candlewood Lake, Congress Township, Morrow County, Ohio, this 3RD day of July, 1972.  
*Justin Early* Morrow County Engineer

AUDITOR'S CERTIFICATION  
I HEREBY CERTIFY that there are no delinquent or unpaid taxes of record upon the above described property as of the date of transfer.  
TRANSFERRED July 3, 1972.  
*Merrill Cougill* Morrow County Auditor

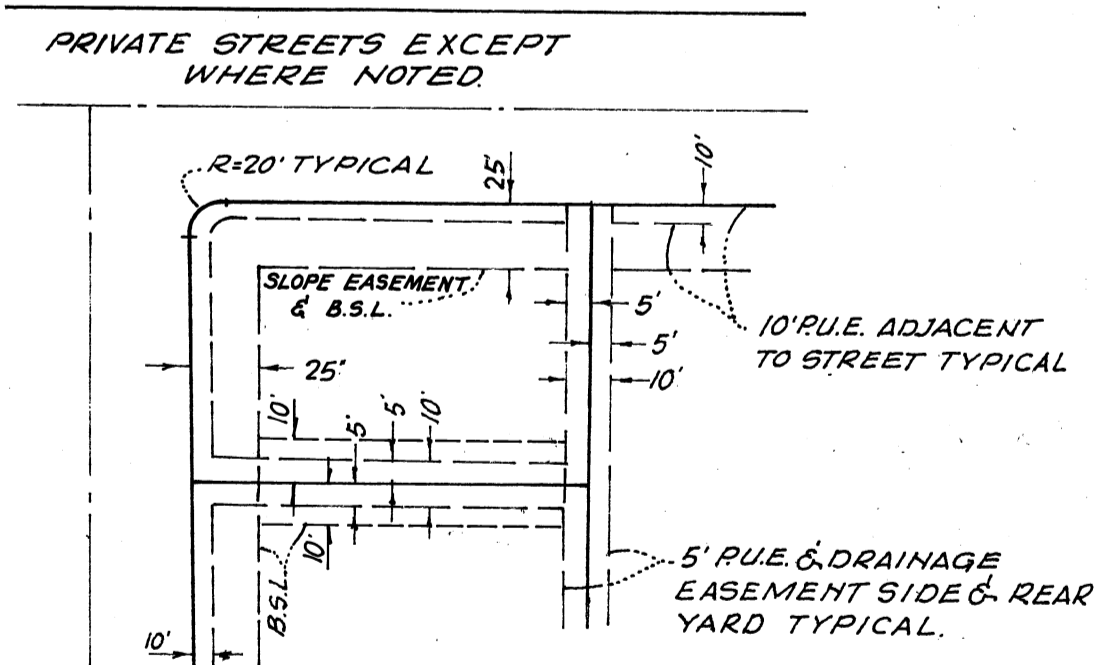
RECORDER'S CERTIFICATION  
HEREBY CERTIFY that the within plat was filed July 3 O'clock 10:20 AM, 1972, in Candlewood Lake Plat Book, Pages 1 to UNIT 7 inclusive of the Morrow County Records.  
FEE 77.00  
*Dorothy Thompson* Morrow County Recorder

Volume 1 Page 37



- NOTES:**
1. REAR LOT PINS WERE NOT SET AT THE REAR OF LOTS 23 TO 169 INCLUSIVE.
  2. WITNESS POINTS WERE SET AS SHOWN Δ, 150' FROM THE FRONT LOT CORNER, EXCEPT WHERE NOTED.
  3. THE LAKE LINE SHOWN IS FOR A NORMAL WATER SURFACE AT ELEVATION 1205 BASED UPON APRIL 1971 TOPOGRAPHY COMPILED BY HENDERSON AERIAL SURVEYS OF OHIO.

**LEGEND**  
 B.S.L. = BUILDING SETBACK LINE.  
 L = ARC LENGTH  
 T = TANGENT LENGTH  
 P.U.E. = PUBLIC UTILITY EASEMENT  
 LOTS 54 TO 60 INCLUSIVE ARE SUBJECT TO DRAINAGE EASEMENTS IN THEIR ENTIRETY.

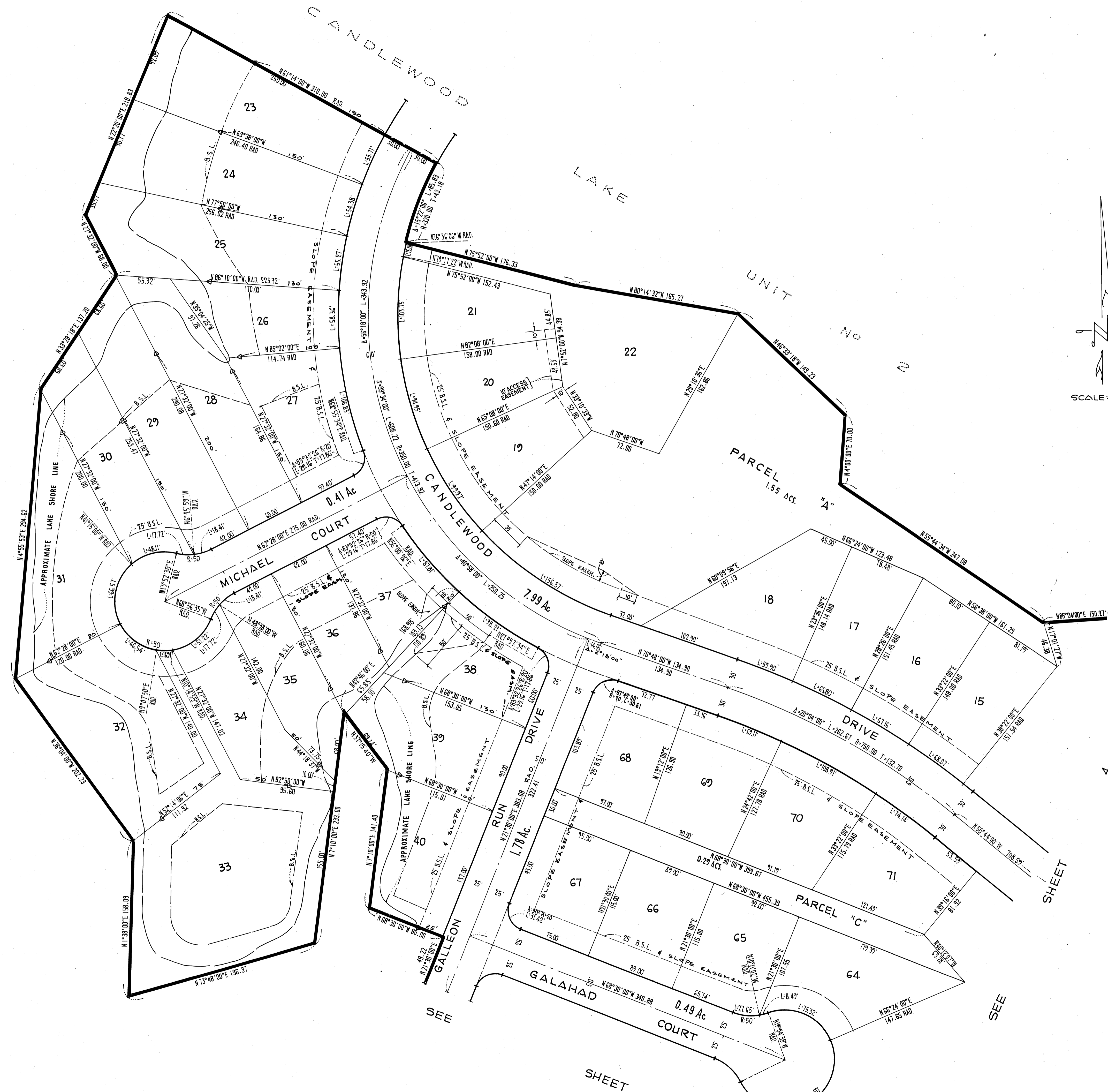


THE STREETS WITHIN THE SUBDIVISION ARE RESERVED FOR THE USE OF ALL PUBLIC UTILITY COMPANIES.

**TYPICAL FRONT AND SIDEYARD SETBACK, SLOPE EASEMENT AND P.U.E. DETAIL.**  
 (NO SCALE)

**CANDLEWOOD LAKE UNIT NO. 7**

BEING A SUBDIVISION OF PORTIONS OF SECTIONS 8 AND 17 TOWNSHIP 18 RANGE 20 CONGRESS TOWNSHIP, IN THE COUNTY OF MORROW, STATE OF OHIO.

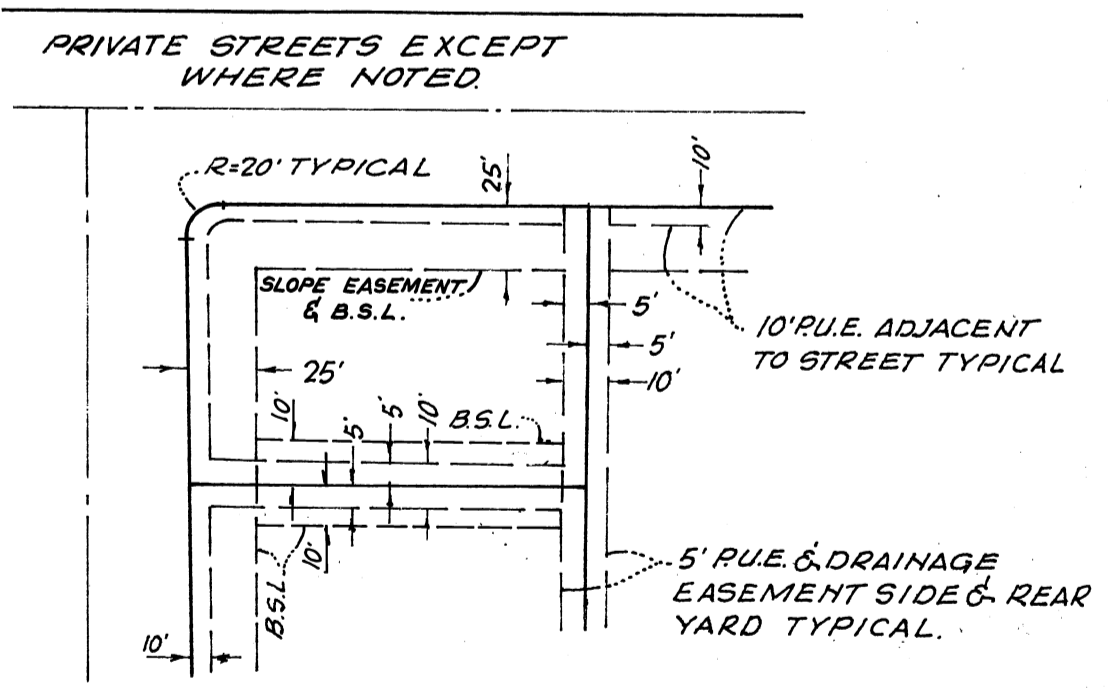
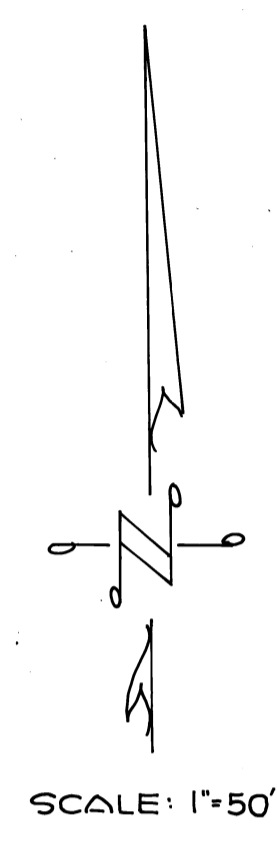


**NOTES:**

1. REAR LOT PINS WERE NOT SET AT THE REAR OF LOTS 23 TO 169 INCLUSIVE.
2. WITNESS POINTS WERE SET AS SHOWN Δ, 150' FROM THE FRONT LOT CORNER, EXCEPT WHERE NOTED.
3. THE LAKE LINE SHOWN IS FOR A NORMAL WATER SURFACE AT ELEVATION 1205 BASED UPON APRIL 1971 TOPOGRAPHY COMPILED BY HENDERSON AERIAL SURVEYS OF OHIO.

**LEGEND**

B.S.L. = BUILDING SETBACK LINE.  
 L = ARC LENGTH  
 T = TANGENT LENGTH  
 P.U.E. = PUBLIC UTILITY EASEMENT  
 LOTS "A" TO "Q" INCLUSIVE ARE SUBJECT TO DRAINAGE EASEMENTS IN THEIR ENTIRETY.

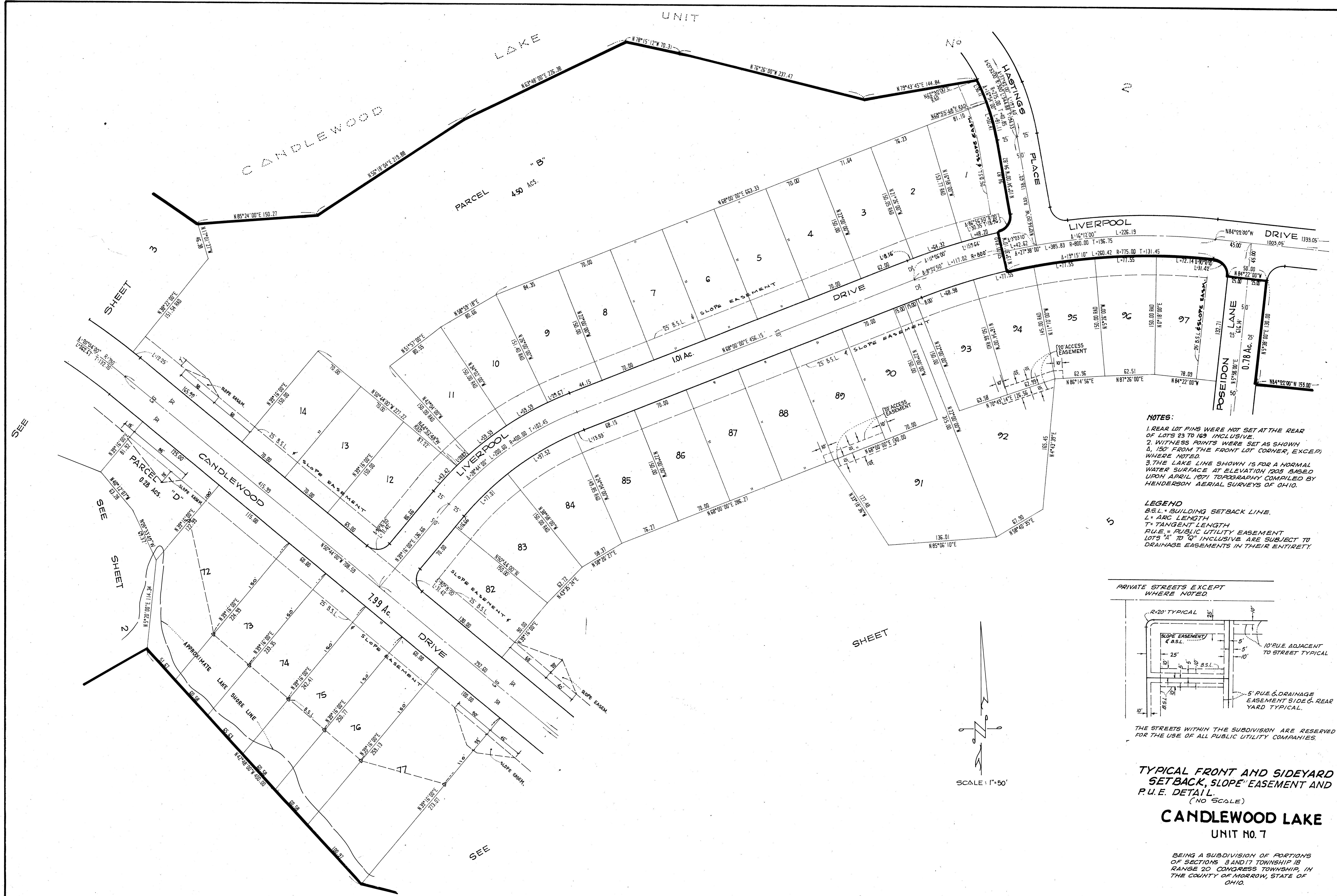


THE STREETS WITHIN THE SUBDIVISION ARE RESERVED FOR THE USE OF ALL PUBLIC UTILITY COMPANIES.

**TYPICAL FRONT AND SIDEYARD SETBACK, SLOPE EASEMENT AND P.U.E. DETAIL.**  
 (NO SCALE)

**CANDLEWOOD LAKE**  
 UNIT NO. 7

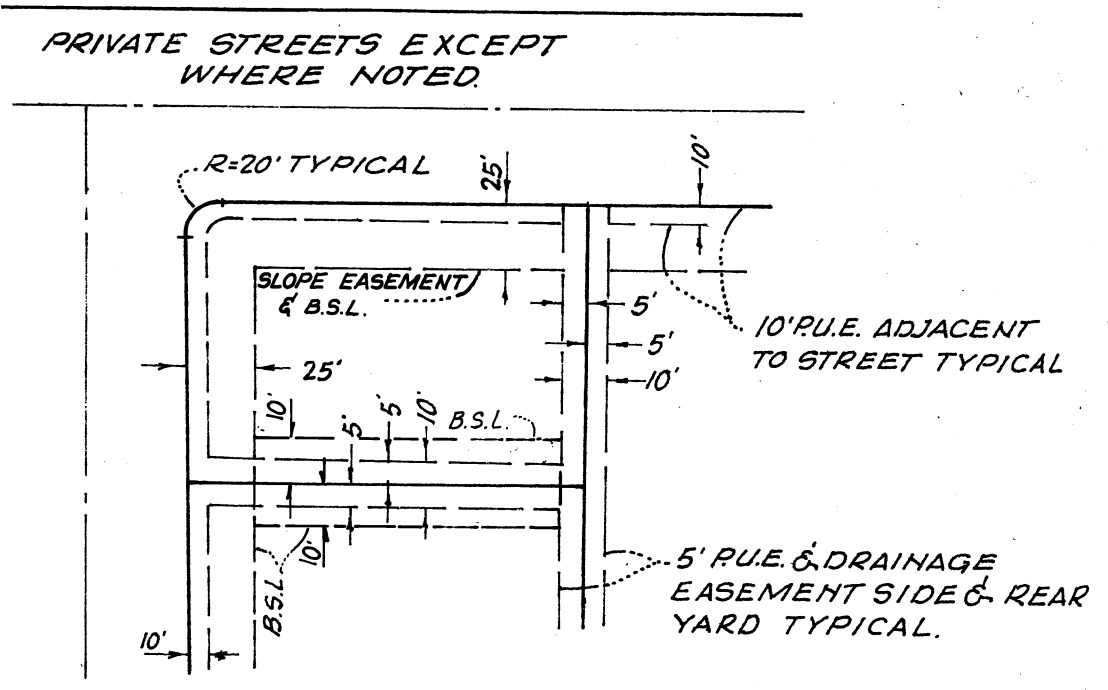
BEING A SUBDIVISION OF PORTIONS OF SECTIONS 5 & 17 TOWNSHIP 18 RANGE 20 CONGRESS TOWNSHIP, IN THE COUNTY OF MORROW, STATE OF OHIO.



- NOTES:**
1. REAR LOT PINS WERE NOT SET AT THE REAR OF LOTS 23 TO 169 INCLUSIVE.
  2. WITNESS POINTS WERE SET AS SHOWN & 150' FROM THE FRONT LOT CORNER, EXCEPT WHERE NOTED.
  3. THE LAKE LINE SHOWN IS FOR A NORMAL WATER SURFACE AT ELEVATION 1205 BASED UPON APRIL 1971 TOPOGRAPHY COMPILED BY HENDERSON AERIAL SURVEYS OF OHIO.

**LEGEND**

B.S.L. = BUILDING SETBACK LINE.  
 L = ARC LENGTH  
 T = TANGENT LENGTH  
 P.U.E. = PUBLIC UTILITY EASEMENT  
 LOTS "A" TO "Q" INCLUSIVE ARE SUBJECT TO DRAINAGE EASEMENTS IN THEIR ENTIRETY.

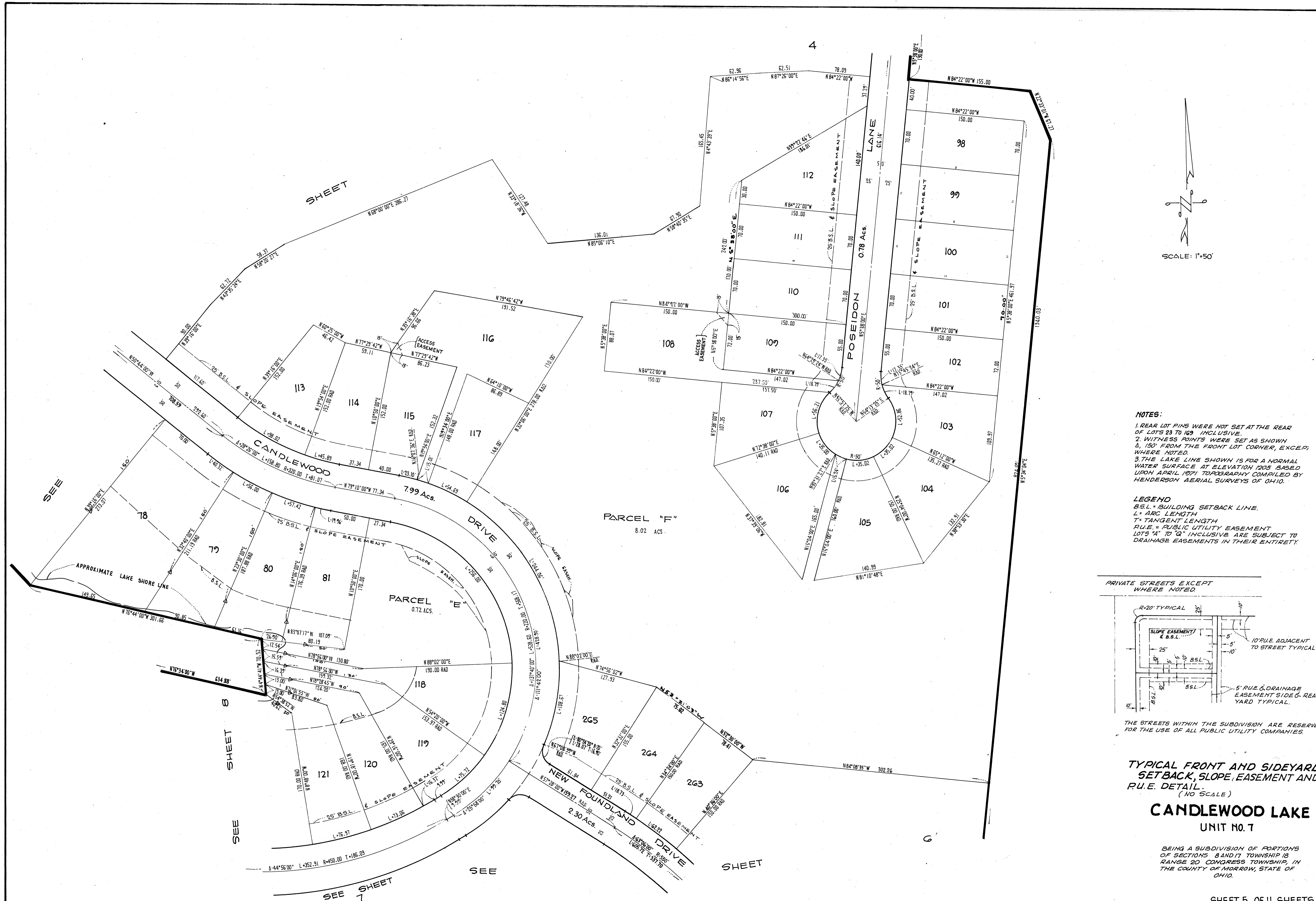


THE STREETS WITHIN THE SUBDIVISION ARE RESERVED FOR THE USE OF ALL PUBLIC UTILITY COMPANIES.

**TYPICAL FRONT AND SIDEYARD SETBACK, SLOPE EASEMENT AND P.U.E. DETAIL.**  
 (NO SCALE)

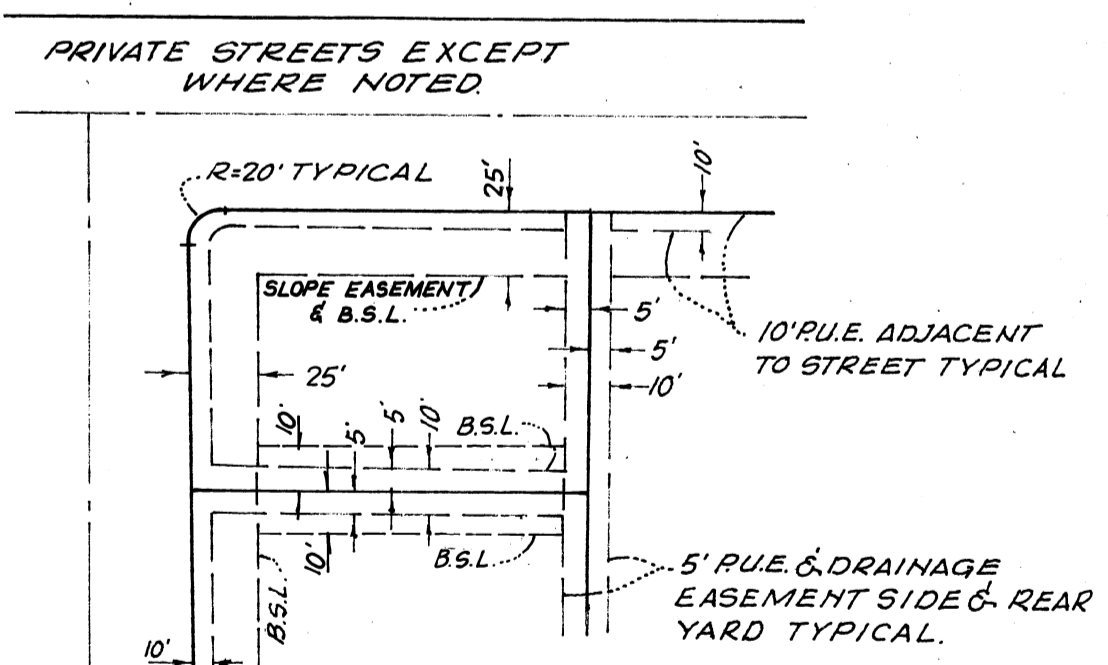
**CANDLEWOOD LAKE UNIT NO. 7**

BEING A SUBDIVISION OF PORTIONS OF SECTIONS 8 AND 17 TOWNSHIP 18 RANGE 20 CONGRESS TOWNSHIP, IN THE COUNTY OF MORROW, STATE OF OHIO.



- NOTES:**
1. REAR LOT PINS WERE NOT SET AT THE REAR OF LOTS 23 TO 169 INCLUSIVE.
  2. WITNESS POINTS WERE SET AS SHOWN & 150' FROM THE FRONT LOT CORNER, EXCEPT WHERE NOTED.
  3. THE LAKE LINE SHOWN IS FOR A NORMAL WATER SURFACE AT ELEVATION 1205 BASED UPON APRIL 1971 TOPOGRAPHY COMPILED BY HENDERSON AERIAL SURVEYS OF OHIO.

**LEGEND**  
 B.S.L. = BUILDING SETBACK LINE.  
 L = ARC LENGTH  
 T = TANGENT LENGTH  
 P.U.E. = PUBLIC UTILITY EASEMENT  
 LOTS 11 TO 19 INCLUSIVE ARE SUBJECT TO DRAINAGE EASEMENTS IN THEIR ENTIRETY.

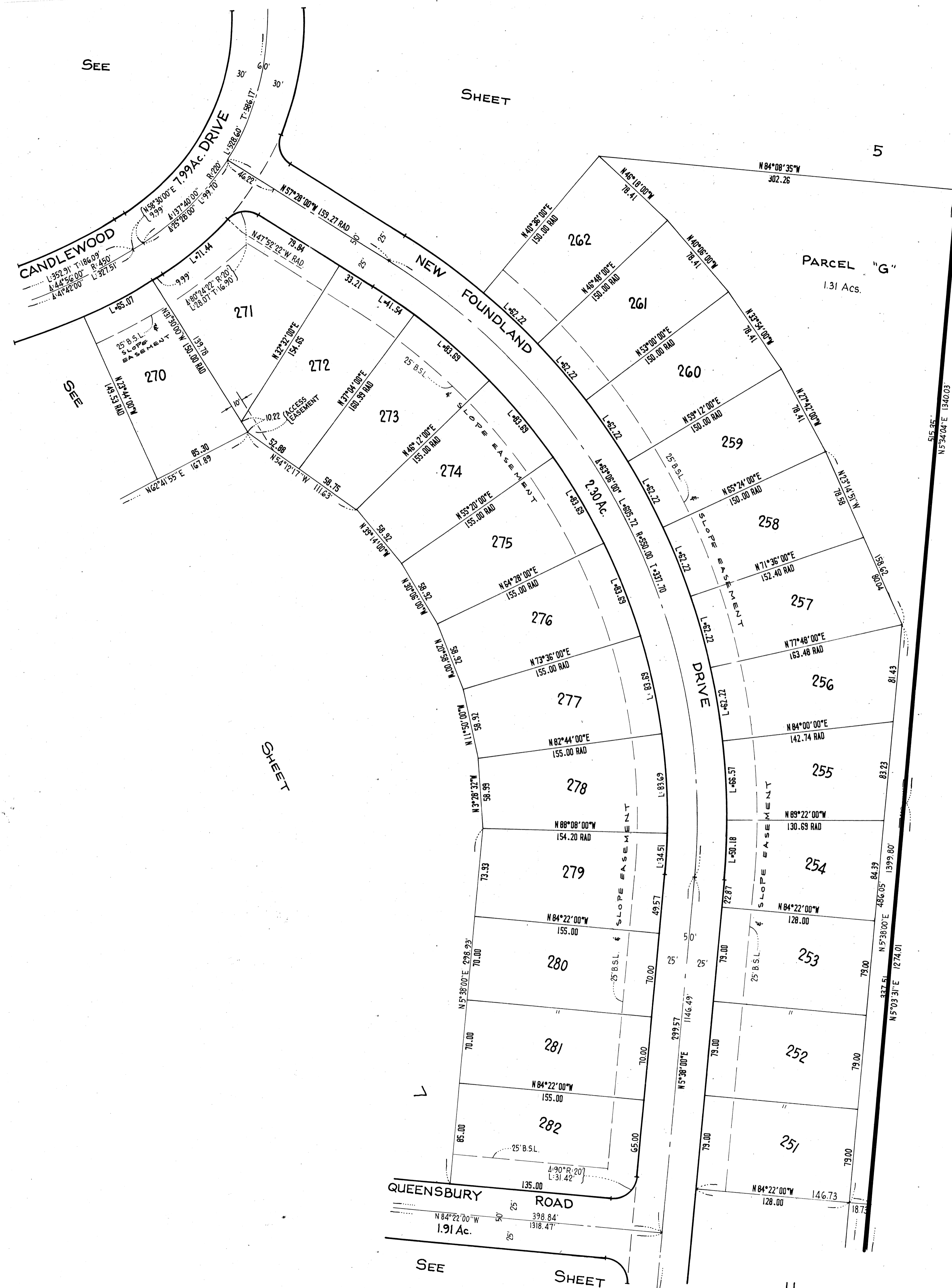


THE STREETS WITHIN THE SUBDIVISION ARE RESERVED FOR THE USE OF ALL PUBLIC UTILITY COMPANIES.

**TYPICAL FRONT AND SIDEYARD SETBACK, SLOPE, EASEMENT AND P.U.E. DETAIL.**  
 (NO SCALE)

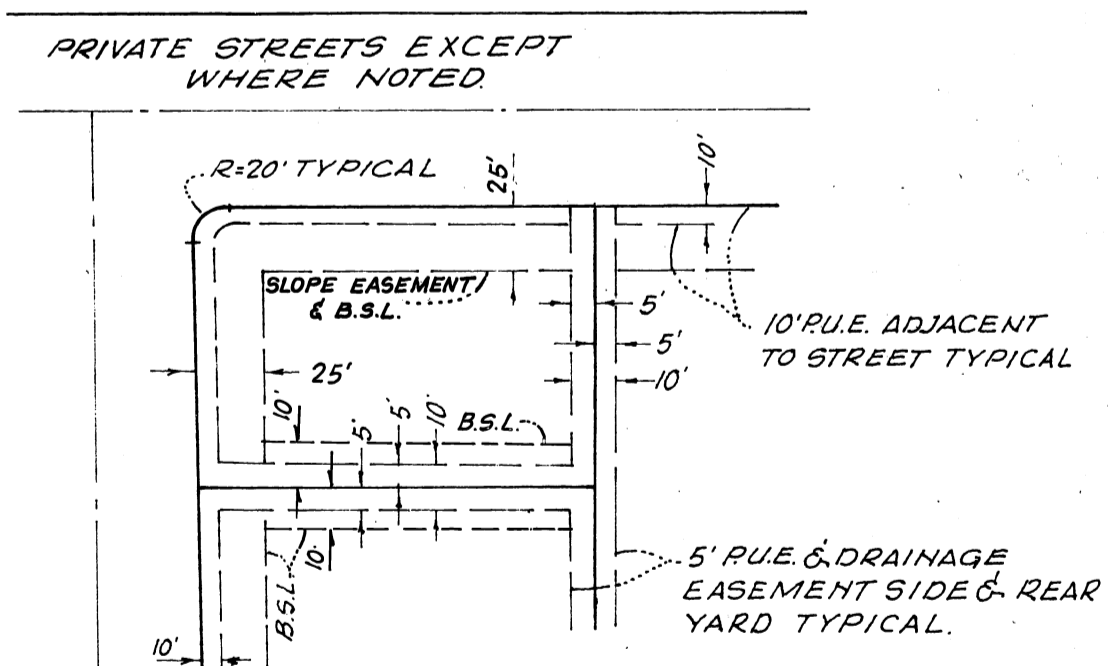
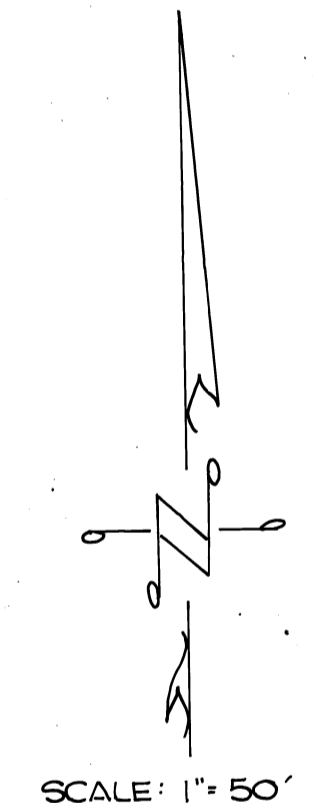
**CANDLEWOOD LAKE UNIT NO. 7**

BEING A SUBDIVISION OF PORTIONS OF SECTIONS 5 AND 17 TOWNSHIP 18 RANGE 20 CONGRESS TOWNSHIP, IN THE COUNTY OF MORROW, STATE OF OHIO.



- NOTES:**
1. REAR LOT PINS WERE NOT SET AT THE REAR OF LOTS 25 TO 169, INCLUSIVE.
  2. WITNESS POINTS WERE SET AS SHOWN AT 150' FROM THE FRONT LOT CORNER, EXCEPT WHERE NOTED.
  3. THE LAKE LINE SHOWN IS FOR A NORMAL WATER SURFACE AT ELEVATION 1205 BASED UPON APRIL 1971 TOPOGRAPHY COMPILED BY HENDERSON AERIAL SURVEYS OF OHIO.

**LEGEND**  
 B.S.L. = BUILDING SETBACK LINE.  
 L = ARC LENGTH  
 T = TANGENT LENGTH  
 P.U.E. = PUBLIC UTILITY EASEMENT  
 LOTS "A" TO "Q" INCLUSIVE ARE SUBJECT TO DRAINAGE EASEMENTS IN THEIR ENTIRETY.



THE STREETS WITHIN THE SUBDIVISION ARE RESERVED FOR THE USE OF ALL PUBLIC UTILITY COMPANIES.

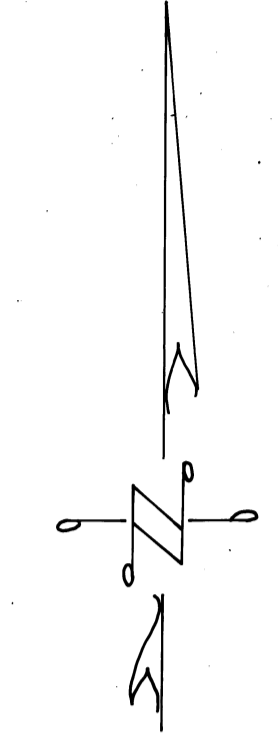
**TYPICAL FRONT AND SIDEYARD SETBACK, SLOPE EASEMENT AND P.U.E. DETAIL.**  
 (NO SCALE)

**CANDLEWOOD LAKE**  
 UNIT NO. 7

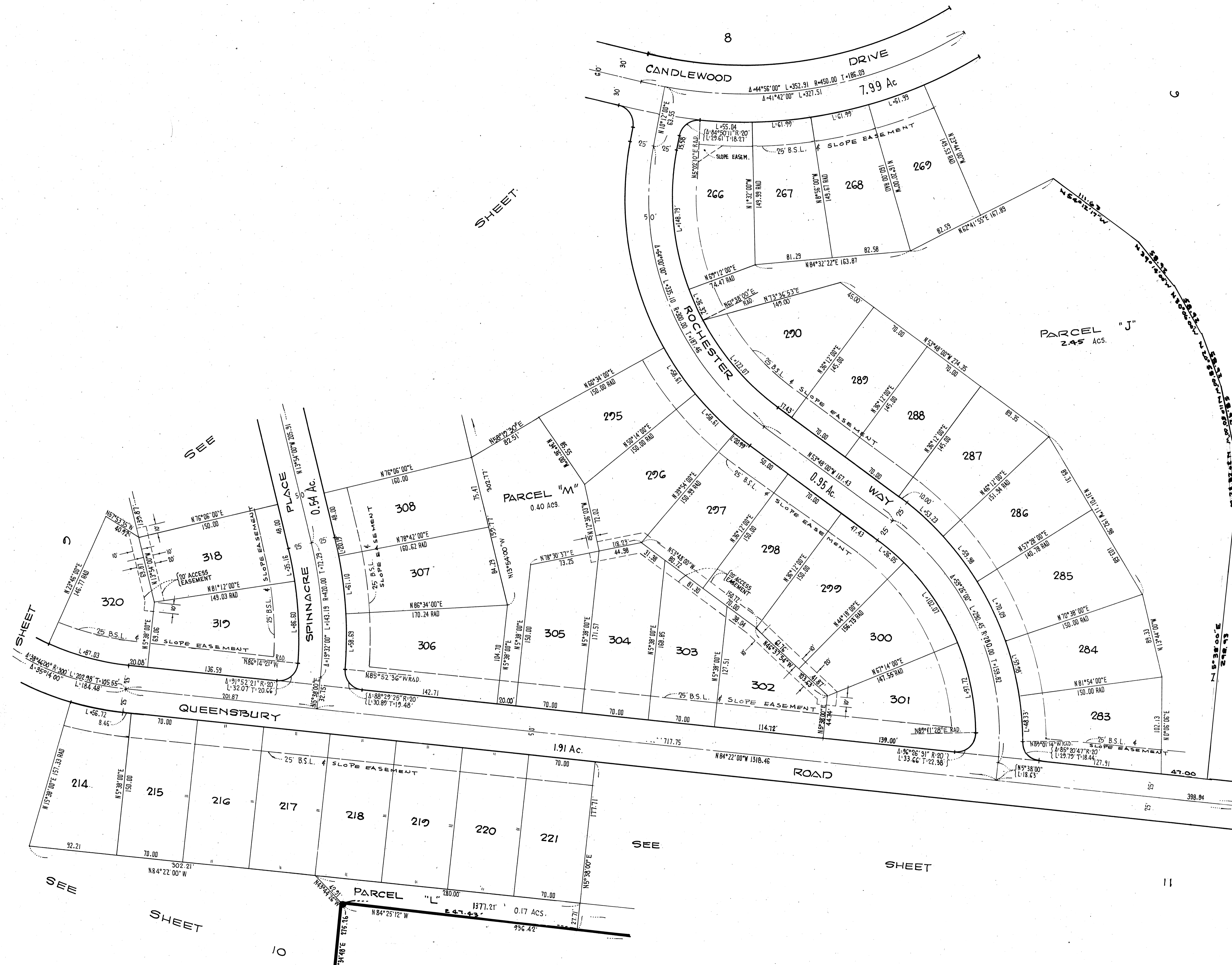
BEING A SUBDIVISION OF PORTIONS OF SECTIONS 8 AND 17, TOWNSHIP 18, RANGE 20, CONGRESS TOWNSHIP, IN THE COUNTY OF MORROW, STATE OF OHIO.

8

9



SCALE: 1"=50'



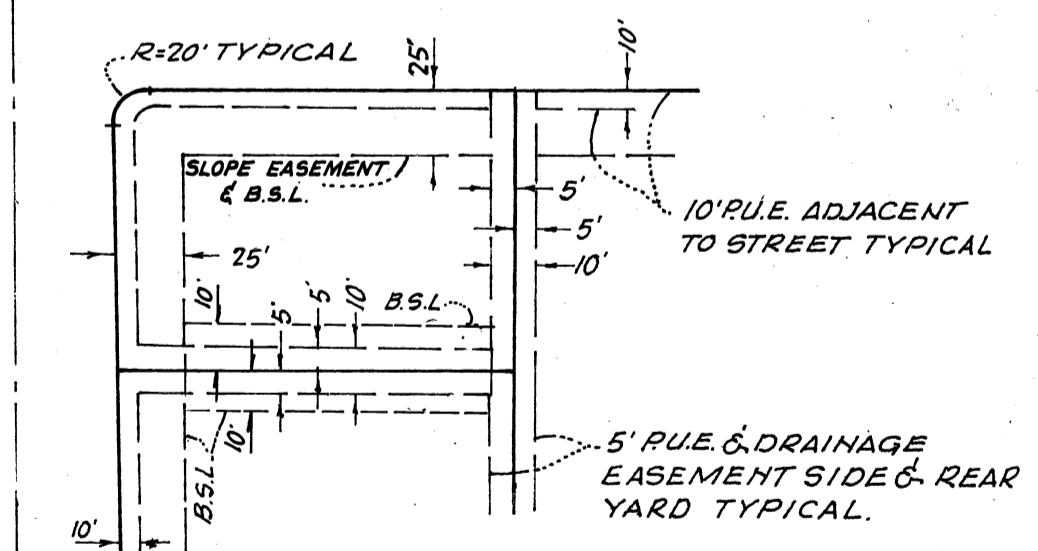
**NOTES:**

1. REAR LOT PINS WERE NOT SET AT THE REAR OF LOTS 26 TO 29 INCLUSIVE.
2. WITNESS POINTS WERE SET AS SHOWN 150' FROM THE FRONT LOT CORNER, EXCEPT WHERE NOTED.
3. THE LAKE LINE SHOWN IS FOR A NORMAL WATER SURFACE AT ELEVATION 1205 BASED UPON APRIL 1971 TOPOGRAPHY COMPILED BY HENDERSON AERIAL SURVEYS OF OHIO.

**LEGEND**

- B.S.L. = BUILDING SETBACK LINE.
- L = ARC LENGTH
- T = TANGENT LENGTH
- R.U.E. = PUBLIC UTILITY EASEMENT
- LOTS "A" TO "Q" INCLUSIVE ARE SUBJECT TO DRAINAGE EASEMENTS IN THEIR ENTIRETY.

PRIVATE STREETS EXCEPT WHERE NOTED

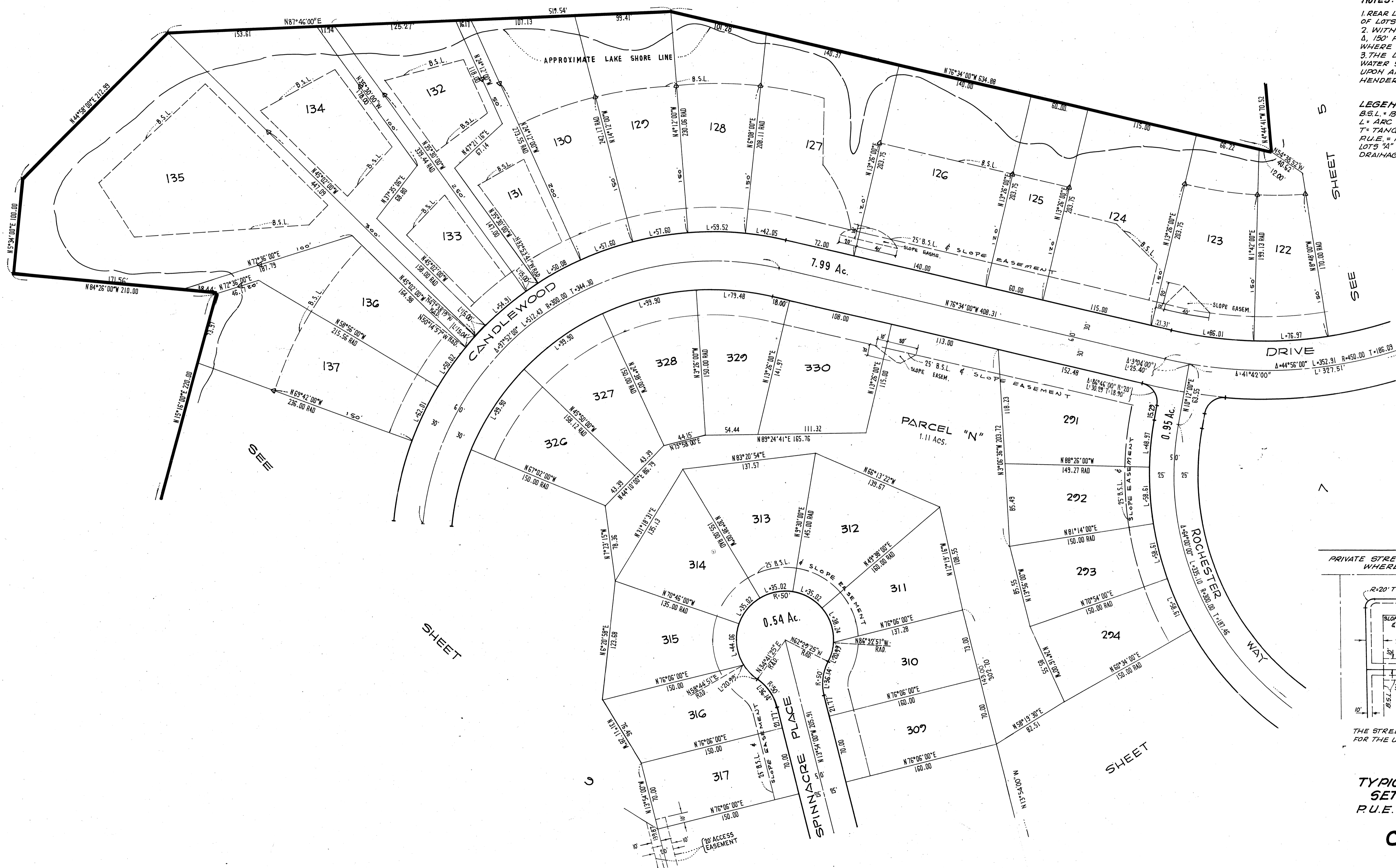


THE STREETS WITHIN THE SUBDIVISION ARE RESERVED FOR THE USE OF ALL PUBLIC UTILITY COMPANIES.

**TYPICAL FRONT AND SIDEYARD SETBACK, SLOPE EASEMENT AND R.U.E. DETAIL.**  
(NO SCALE)

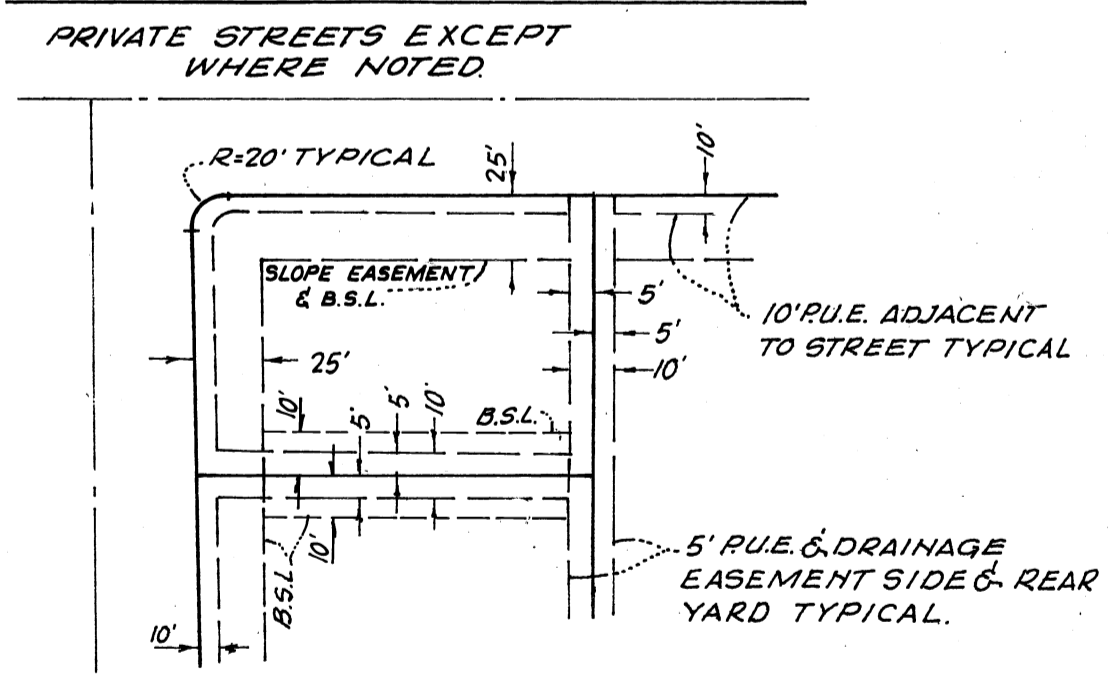
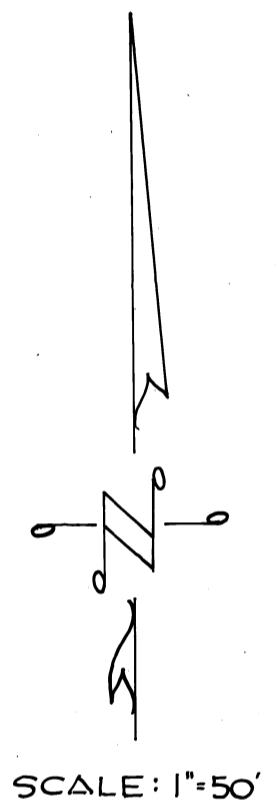
**CANDLEWOOD LAKE UNIT NO. 7**

BEING A SUBDIVISION OF PORTIONS OF SECTIONS 8 AND 17 TOWNSHIP 18 RANGE 20 CONGRESS TOWNSHIP, IN THE COUNTY OF MORROW, STATE OF OHIO.



**NOTES:**  
 1. REAR LOT PINS WERE NOT SET AT THE REAR OF LOTS 23 TO 120 INCLUSIVE.  
 2. WITNESS POINTS WERE SET AS SHOWN 4, 150' FROM THE FRONT LOT CORNER, EXCEPT WHERE NOTED.  
 3. THE LAKE LINE SHOWN IS FOR A NORMAL WATER SURFACE AT ELEVATION 1205 BASED UPON APRIL 1971 TOPOGRAPHY COMPILED BY HENDERSON AERIAL SURVEYS OF OHIO.

**LEGEND**  
 B.S.L. = BUILDING SETBACK LINE.  
 L = ARC LENGTH  
 T = TANGENT LENGTH  
 R.U.E. = PUBLIC UTILITY EASEMENT  
 LOTS 24 TO 120 INCLUSIVE ARE SUBJECT TO DRAINAGE EASEMENTS IN THEIR ENTIRETY



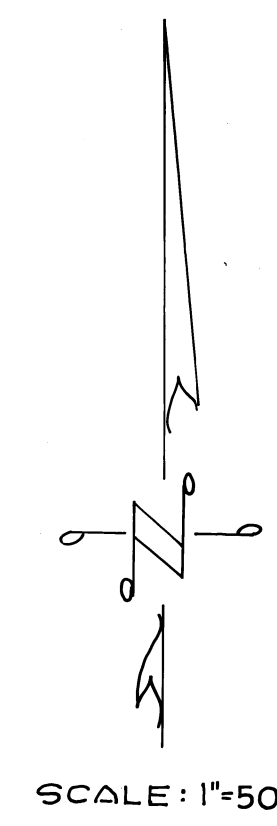
THE STREETS WITHIN THE SUBDIVISION ARE RESERVED FOR THE USE OF ALL PUBLIC UTILITY COMPANIES.

**TYPICAL FRONT AND SIDEYARD SETBACK, SLOPE EASEMENT AND R.U.E. DETAIL.**  
 (NO SCALE)

**CANDLEWOOD LAKE  
 UNIT NO. 7**

BEING A SUBDIVISION OF PORTIONS OF SECTIONS 8 AND 17 TOWNSHIP 13 RANGE 20 CONGRESS TOWNSHIP, IN THE COUNTY OF MORROW, STATE OF OHIO.



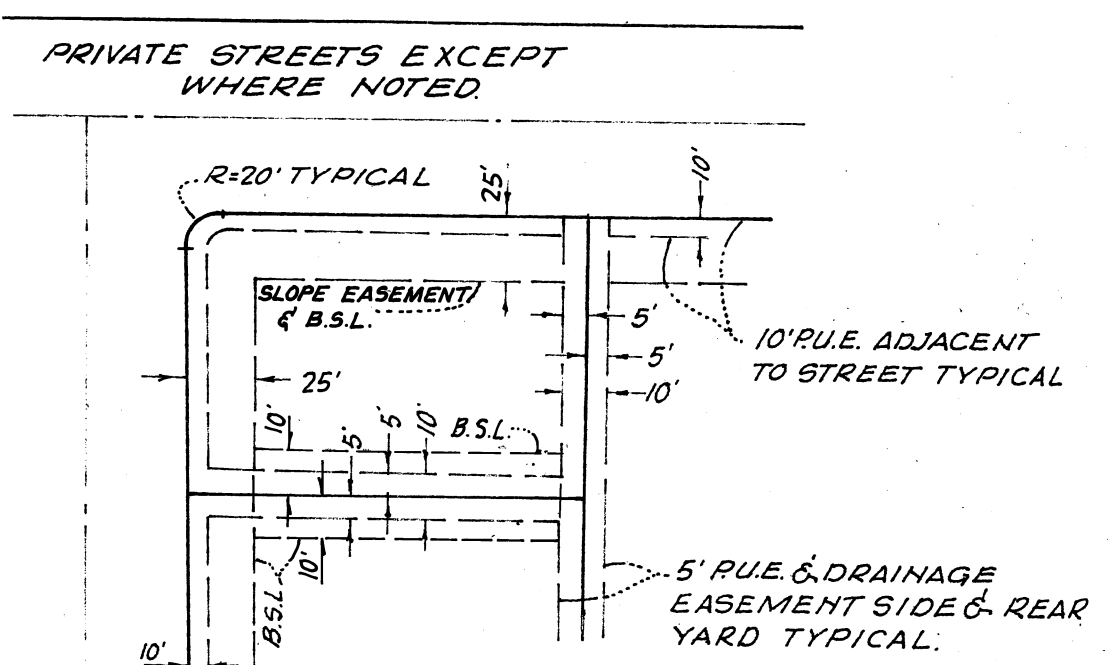


**NOTES:**

1. REAR LOT PINS WERE NOT SET AT THE REAR OF LOTS 23 TO 169 INCLUSIVE.
2. WITNESS POINTS WERE SET AS SHOWN & 150' FROM THE FRONT LOT CORNER, EXCEPT WHERE NOTED.
3. THE LAKE LINE SHOWN IS FOR A NORMAL WATER SURFACE AT ELEVATION 1205 BASED UPON APRIL 1971 TOPOGRAPHY COMPILED BY HENDERSON AERIAL SURVEYS OF OHIO.

**LEGEND**

B.S.L. = BUILDING SETBACK LINE.  
 L = ARC LENGTH  
 T = TANGENT LENGTH  
 P.U.E. = PUBLIC UTILITY EASEMENT  
 LOTS "A" TO "Q" INCLUSIVE ARE SUBJECT TO DRAINAGE EASEMENTS IN THEIR ENTIRETY

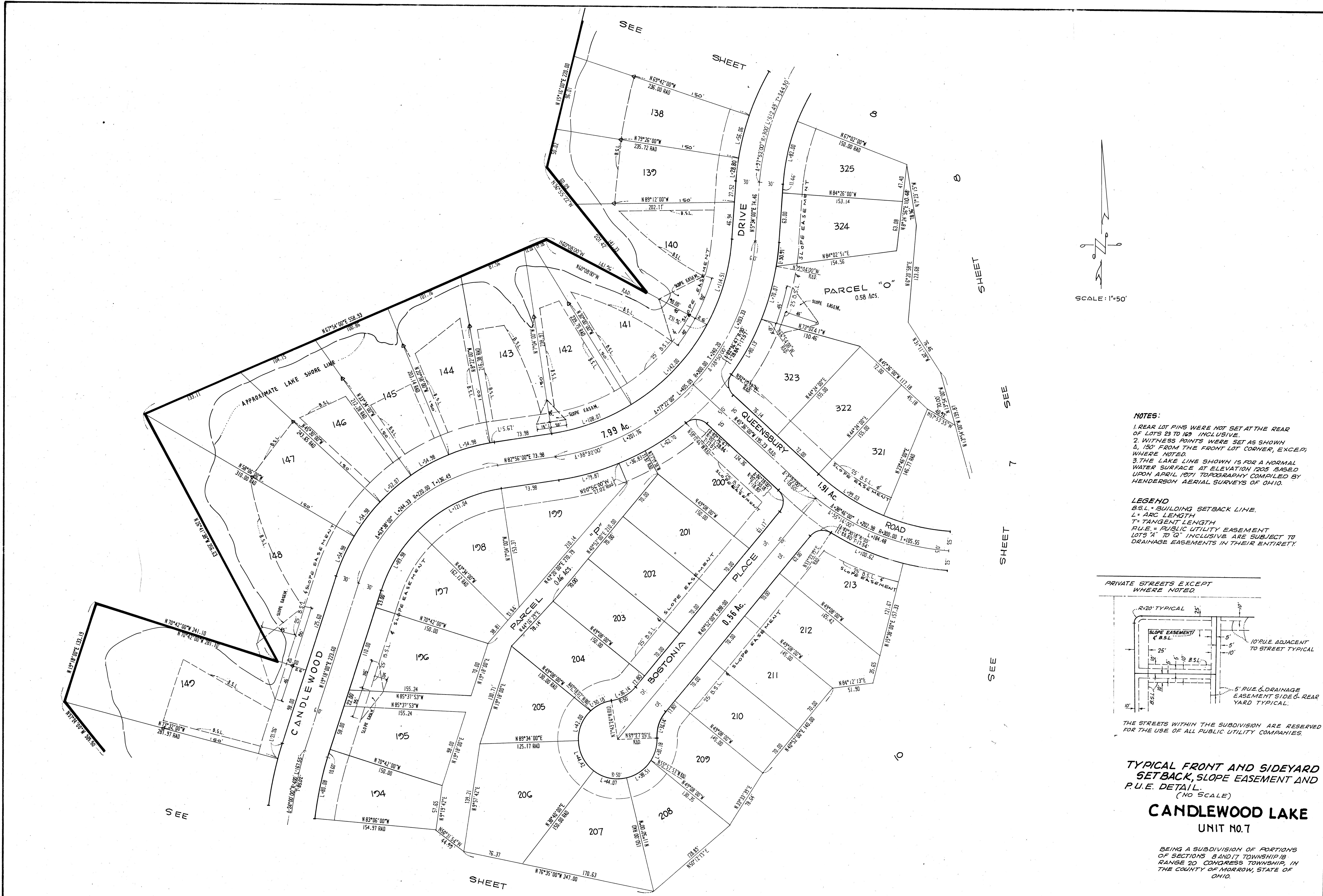


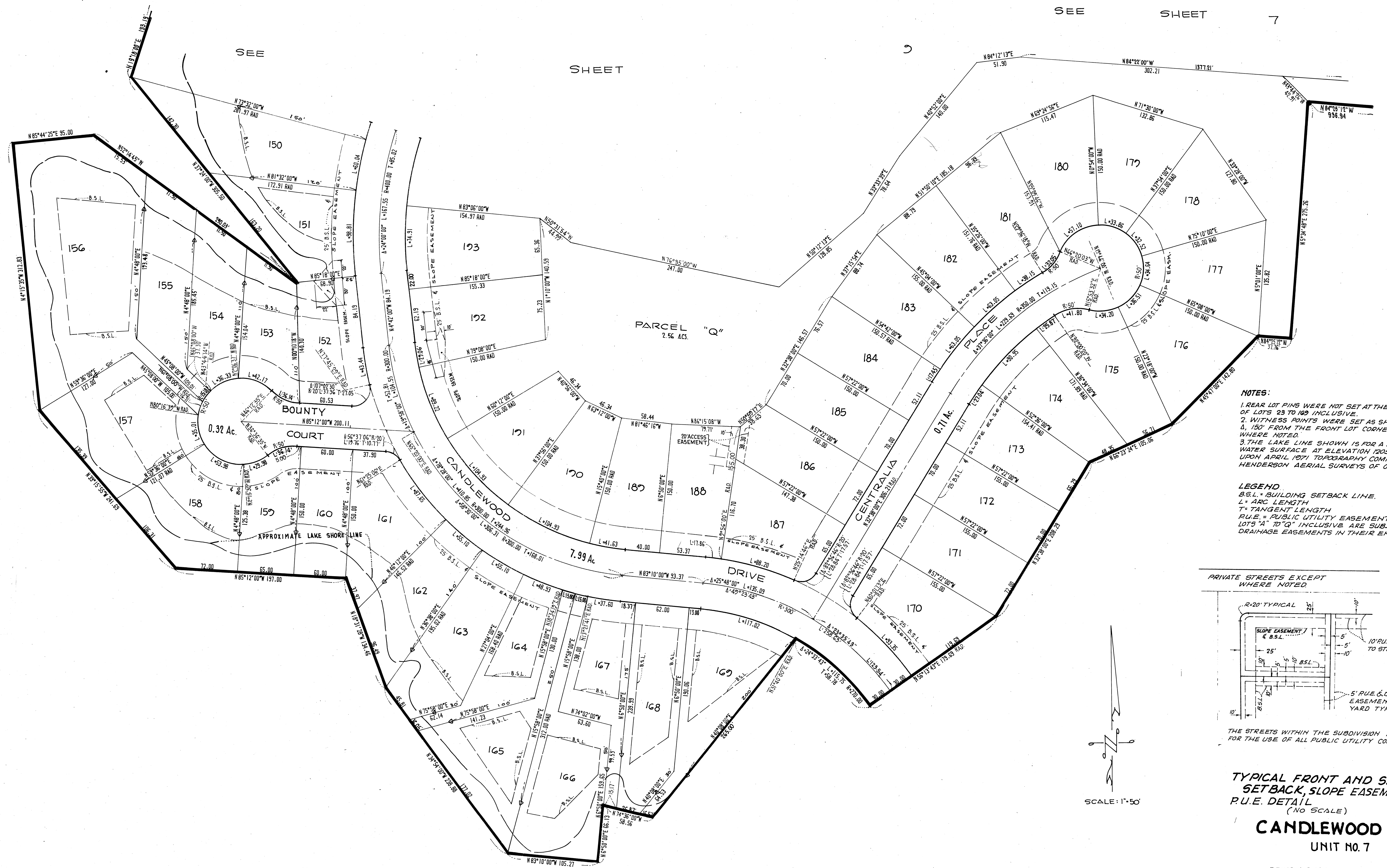
THE STREETS WITHIN THE SUBDIVISION ARE RESERVED FOR THE USE OF ALL PUBLIC UTILITY COMPANIES.

**TYPICAL FRONT AND SIDEYARD SETBACK, SLOPE EASEMENT AND P.U.E. DETAIL.**  
(NO SCALE)

**CANDLEWOOD LAKE UNIT NO. 7**

BEING A SUBDIVISION OF PORTIONS OF SECTIONS 8 AND 17 TOWNSHIP 18 RANGE 20 CONGRESS TOWNSHIP, IN THE COUNTY OF MORROW, STATE OF OHIO.



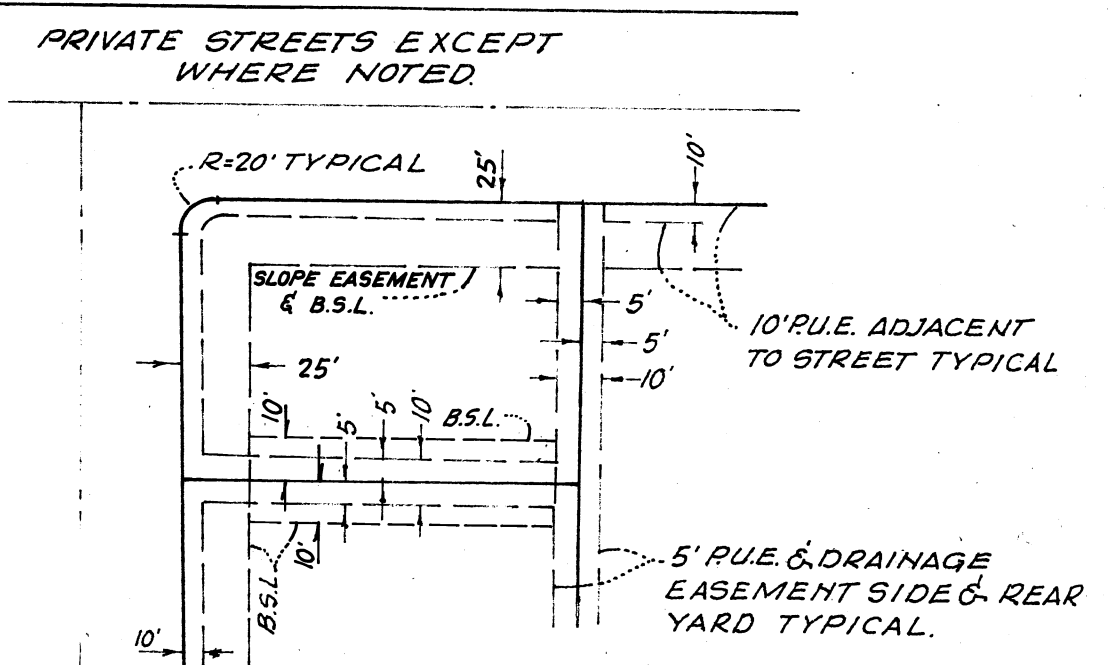


**NOTES:**

1. REAR LOT PINS WERE NOT SET AT THE REAR OF LOTS 23 TO 163 INCLUSIVE.
2. WITNESS POINTS WERE SET AS SHOWN & 150' FROM THE FRONT LOT CORNER, EXCEPT WHERE NOTED.
3. THE LAKE LINE SHOWN IS FOR A NORMAL WATER SURFACE AT ELEVATION 1205 BASED UPON APRIL 1971 TOPOGRAPHY COMPILED BY HENDERSON AERIAL SURVEYS OF OHIO.

**LEGEND**

B.S.L. = BUILDING SETBACK LINE.  
 L = ARC LENGTH  
 T = TANGENT LENGTH  
 P.U.E. = PUBLIC UTILITY EASEMENT  
 LOTS "A" TO "Q" INCLUSIVE ARE SUBJECT TO DRAINAGE EASEMENTS IN THEIR ENTIRETY.



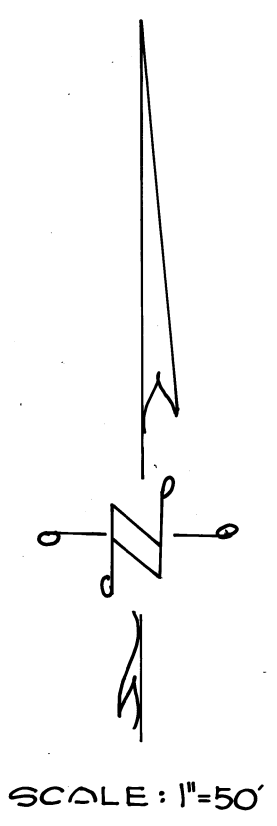
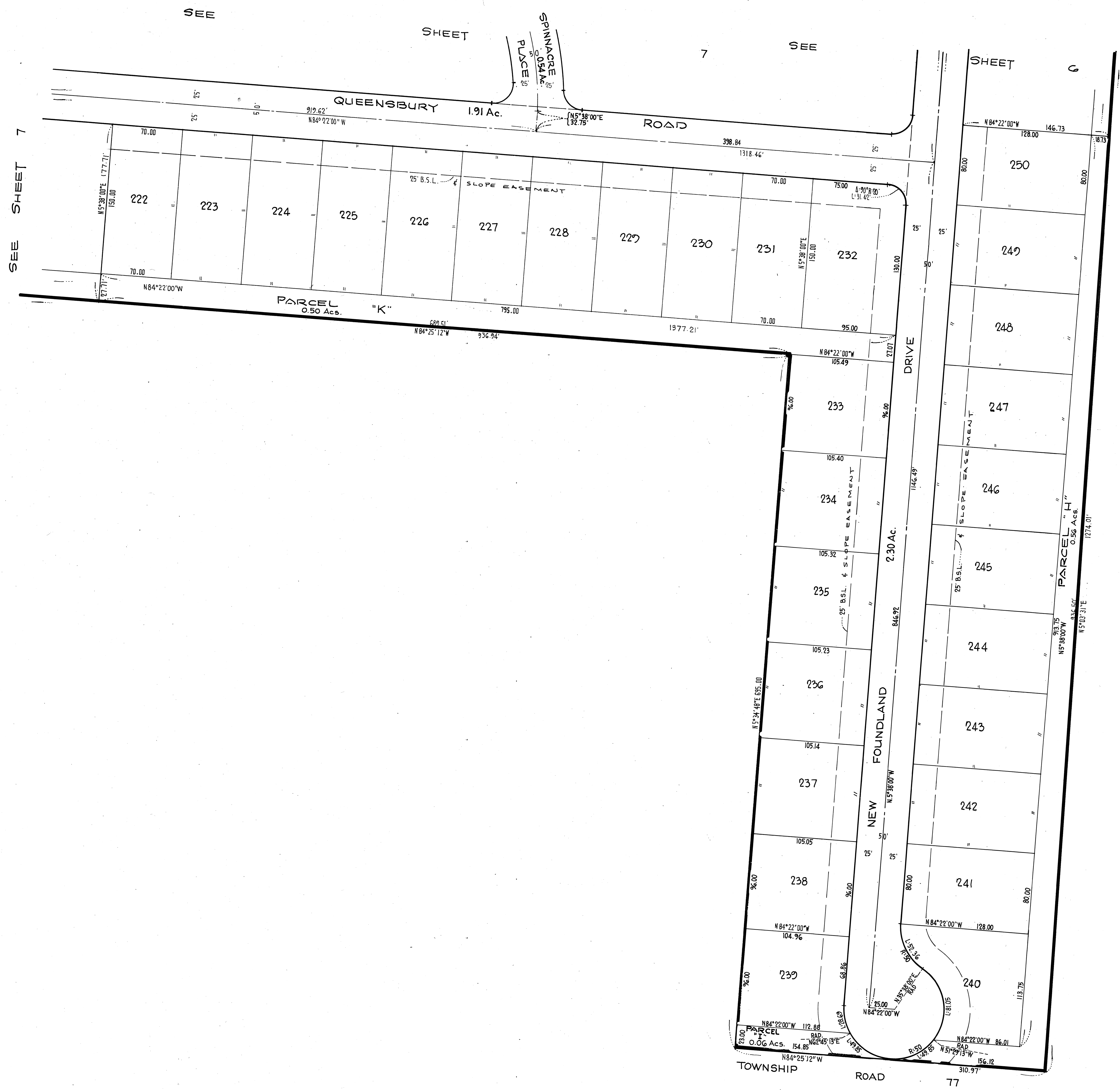
THE STREETS WITHIN THE SUBDIVISION ARE RESERVED FOR THE USE OF ALL PUBLIC UTILITY COMPANIES.

**TYPICAL FRONT AND SIDEYARD SETBACK, SLOPE EASEMENT AND P.U.E. DETAIL**  
(NO SCALE)

**CANDLEWOOD LAKE UNIT NO. 7**

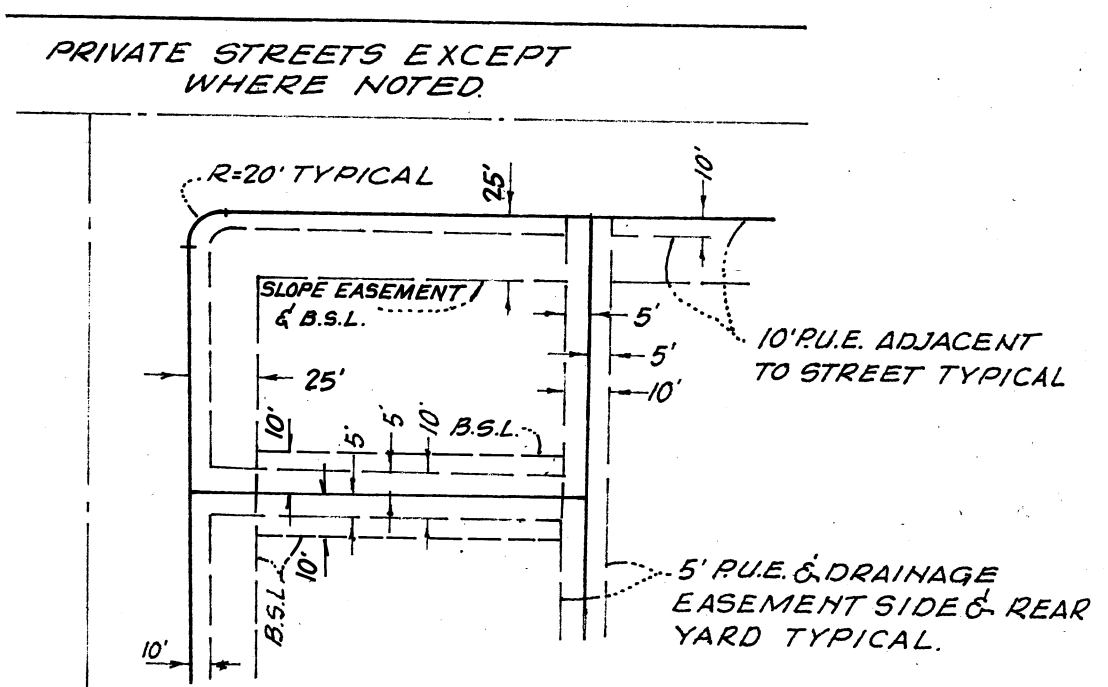
BEING A SUBDIVISION OF PORTIONS OF SECTIONS 8 AND 17 TOWNSHIP 18 RANGE 20 CONGRESS TOWNSHIP, IN THE COUNTY OF MORROW, STATE OF OHIO.

SCALE: 1"=50'



- NOTES:**
1. REAR LOT PINS WERE NOT SET AT THE REAR OF LOTS 23 TO 169 INCLUSIVE.
  2. WITNESS POINTS WERE SET AS SHOWN & 150' FROM THE FRONT LOT CORNER, EXCEPT WHERE NOTED.
  3. THE LAKE LINE SHOWN IS FOR A NORMAL WATER SURFACE AT ELEVATION 1205 BASED UPON APRIL 1971 TOPOGRAPHY COMPILED BY HENDERSON AERIAL SURVEYS OF OHIO.

- LEGEND**
- B.S.L. = BUILDING SETBACK LINE.
  - L = ARC LENGTH
  - T = TANGENT LENGTH
  - P.U.E. = PUBLIC UTILITY EASEMENT
  - LOTS "A" TO "Q" INCLUSIVE ARE SUBJECT TO DRAINAGE EASEMENTS IN THEIR ENTIRETY.



THE STREETS WITHIN THE SUBDIVISION ARE RESERVED FOR THE USE OF ALL PUBLIC UTILITY COMPANIES.

**TYPICAL FRONT AND SIDEYARD SETBACK, SLOPE EASEMENT AND P.U.E. DETAIL.**  
(NO SCALE)

**CANDLEWOOD LAKE**  
UNIT NO. 7

BEING A SUBDIVISION OF PORTIONS OF SECTIONS 8 AND 17 TOWNSHIP 18 RANGE 20 CONGRESS TOWNSHIP, IN THE COUNTY OF MORROW, STATE OF OHIO.